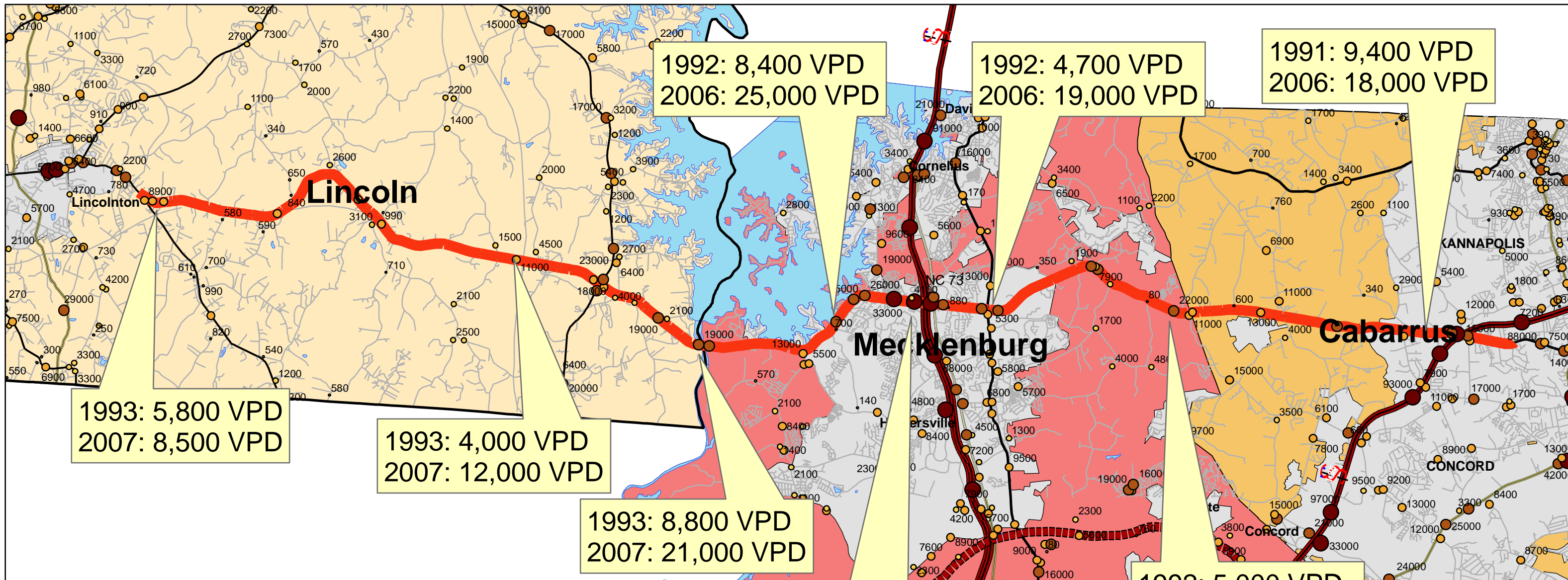


NC 73 Traffic Growth Trends 1991-2007



Legend

2007 Daily Traffic Counts

- 20 - 1,000
- 1,001 - 5,000
- 5,001 - 15,000
- 15,001 - 30,000
- 30,001 - 163,000

- NC 73
- Interstates
- US Highways
- NC Highways

Note: All traffic count data were collected by the NCDOT Traffic Survey Unit. Traffic counts are updated on a rotating basis, so counts will not be conducted for all locations in an individual year. Their web site is http://www.ncdot.org/doh/preconstruct/tpb/traffic_survey/

VPD: Vehicles Per Day (both directions of travel)

Want to learn more about the NC 73 Council of Planning? Go to www.nc73.net.

Map created September 2008 by Centralina Council of Governments

